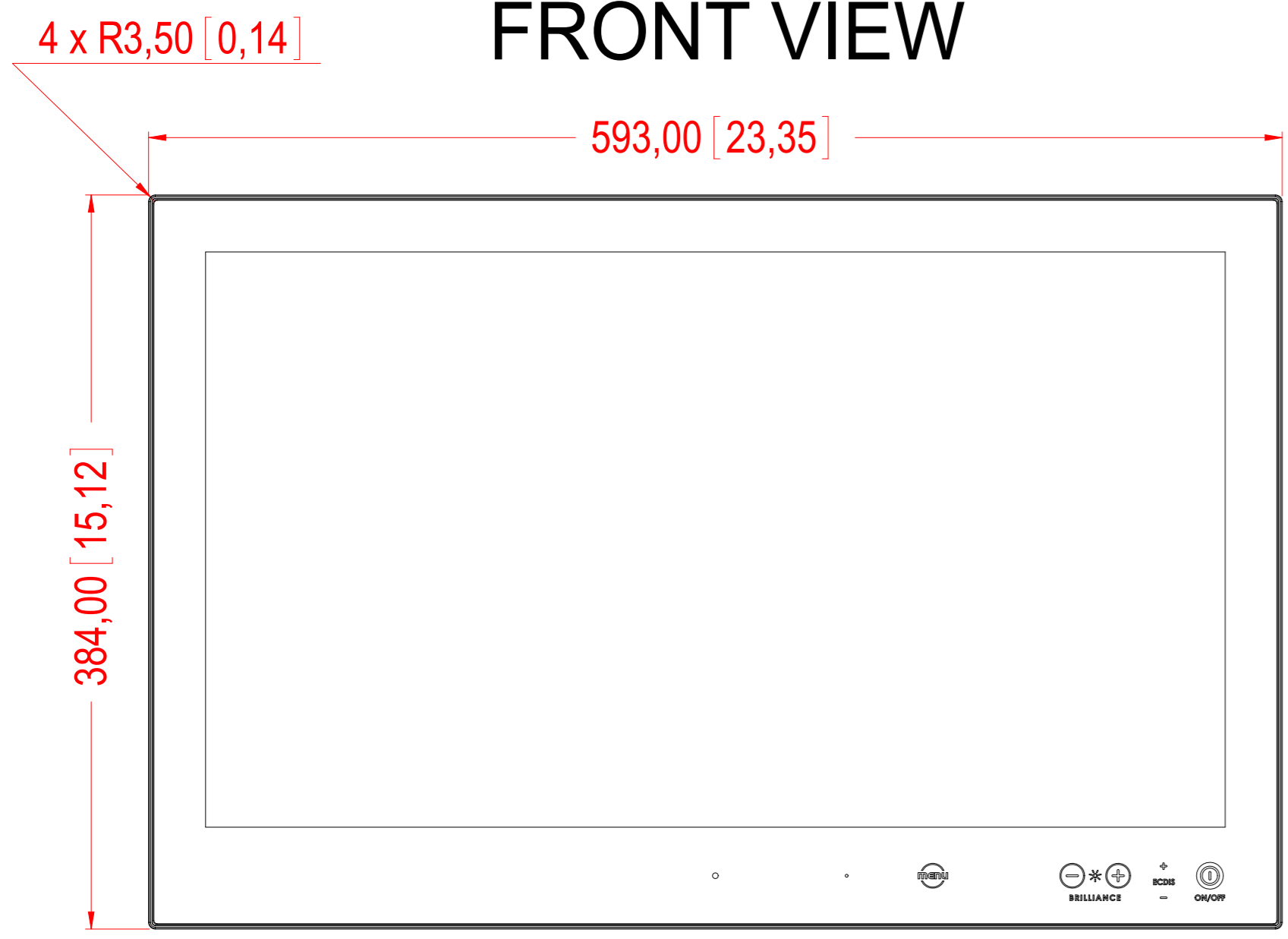


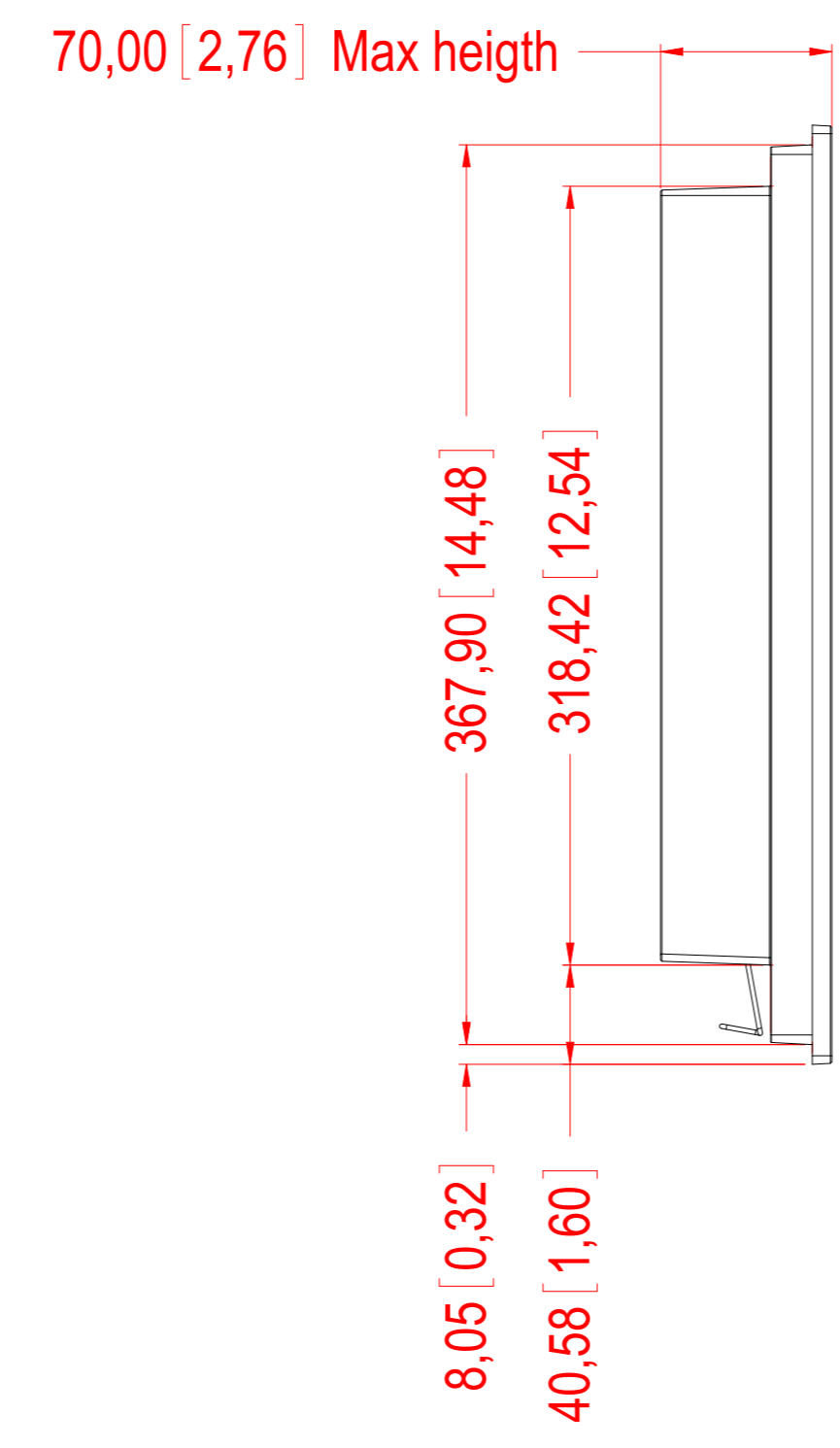
This document is the property of Hatteland Technology AS.
 This document and any authorized reproduction thereof, must not be used in
 any way against the interest of Hatteland Technology AS.
 Any authorized reproduction, in whole or in part, must include this legend.

HATTELAND TECHNOLOGY STANDARD		Created by:	Drawn:	Modified by:	Drawn:	Revision:
Material type and Quality:		Aluminum 5052, standard EN 485-3 (1 & 2)		Surface treatment:		
Working specification:		NS-EN-2884		(1) TRIMKATION (Zinc/Kyanan Phosphat)		
Sheet metal fasteners:		FSM International or equivalent (www.psminternational.com)		(2) Powder coating RAL 9010 EPOXY STRUCTUR DuPont: EP0301-4950327		
				Tolerance:		
				ISO 2768-1 middel		

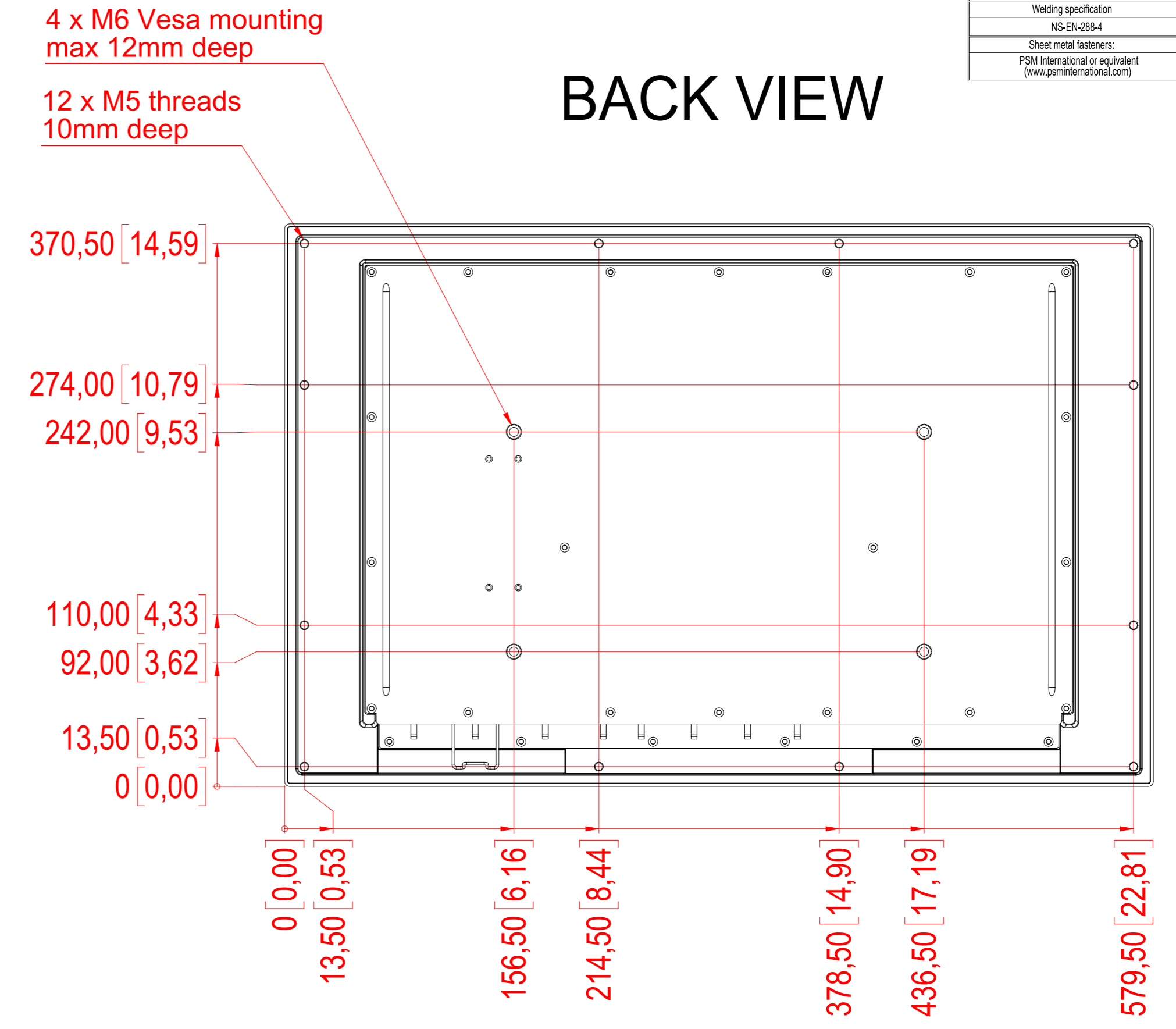
FRONT VIEW



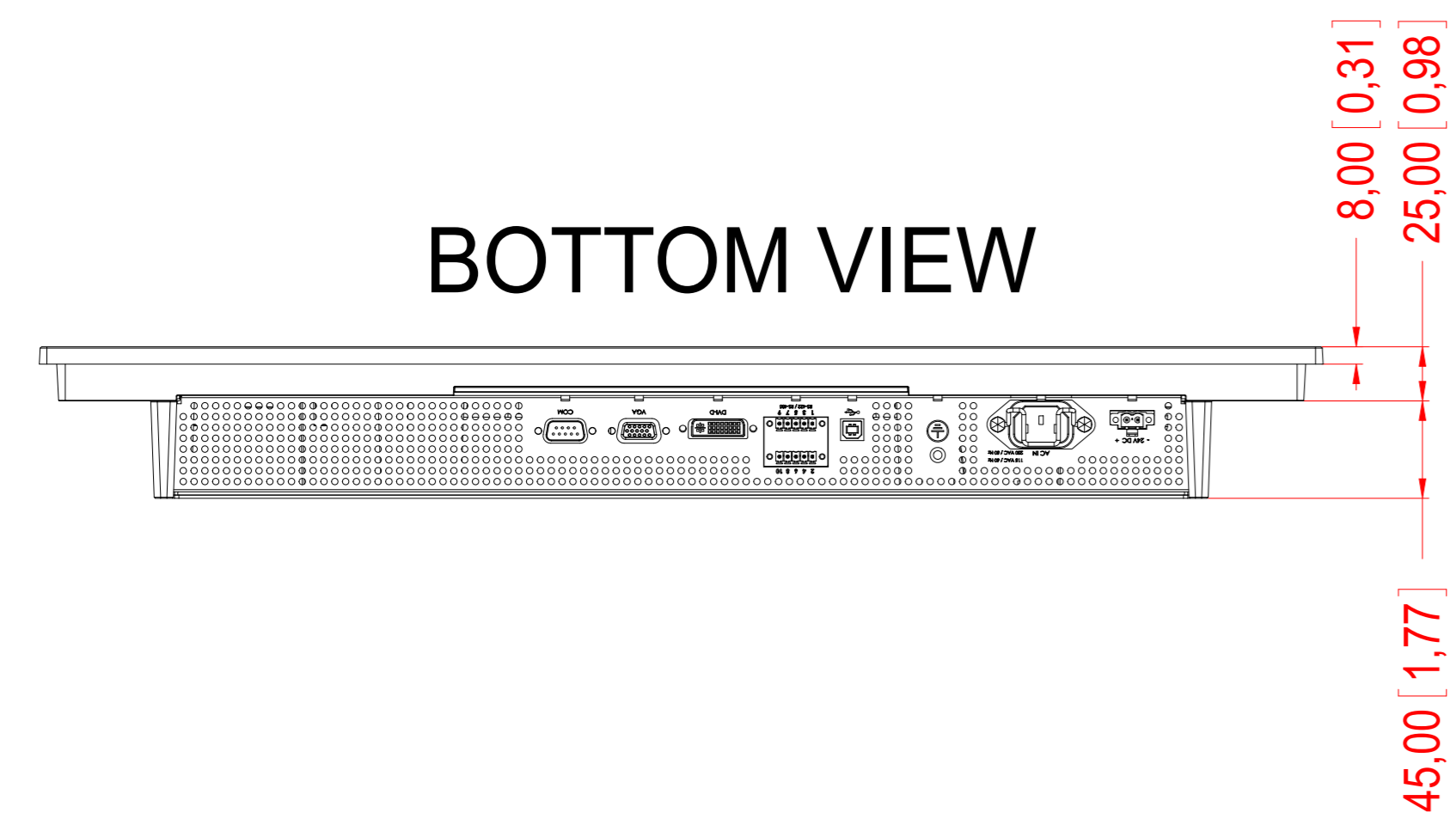
SIDE VIEW



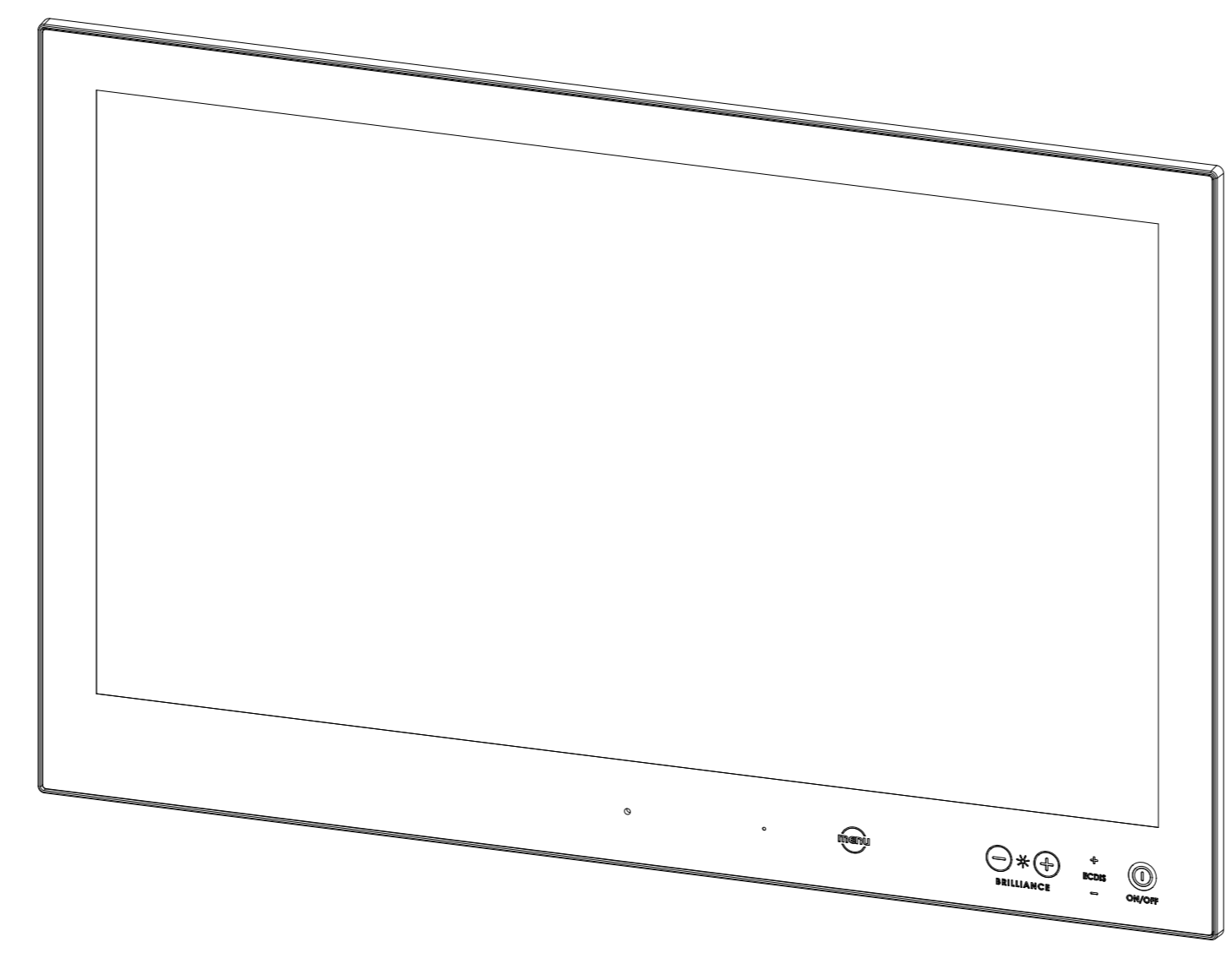
BACK VIEW



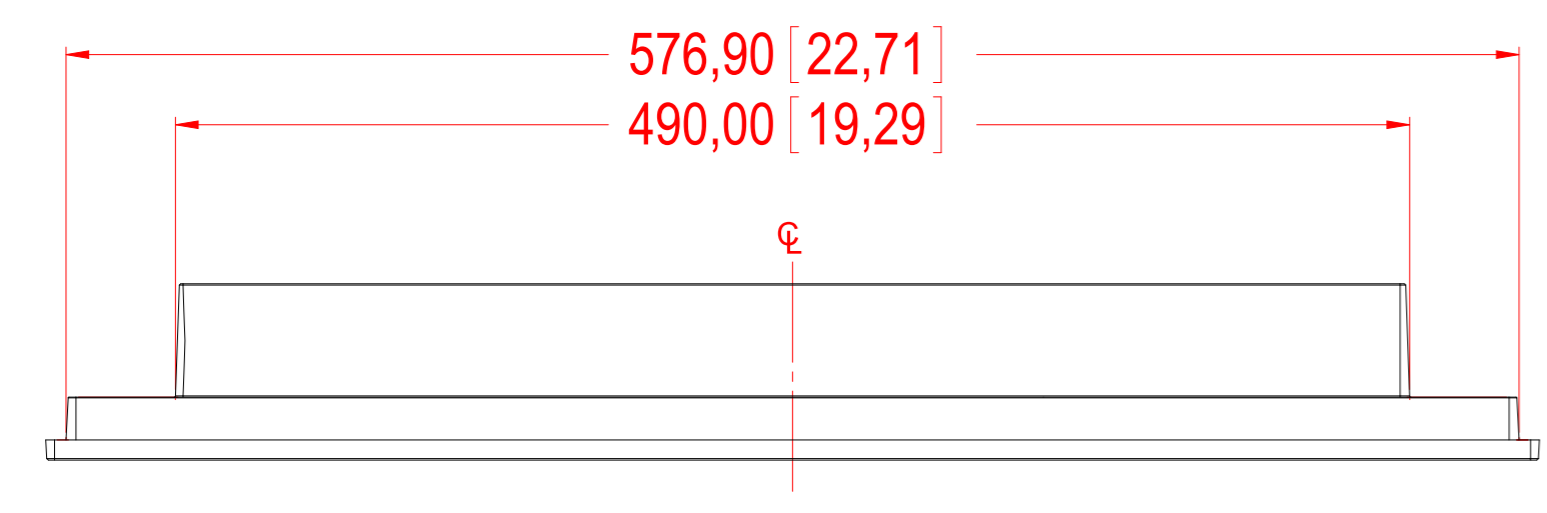
BOTTOM VIEW



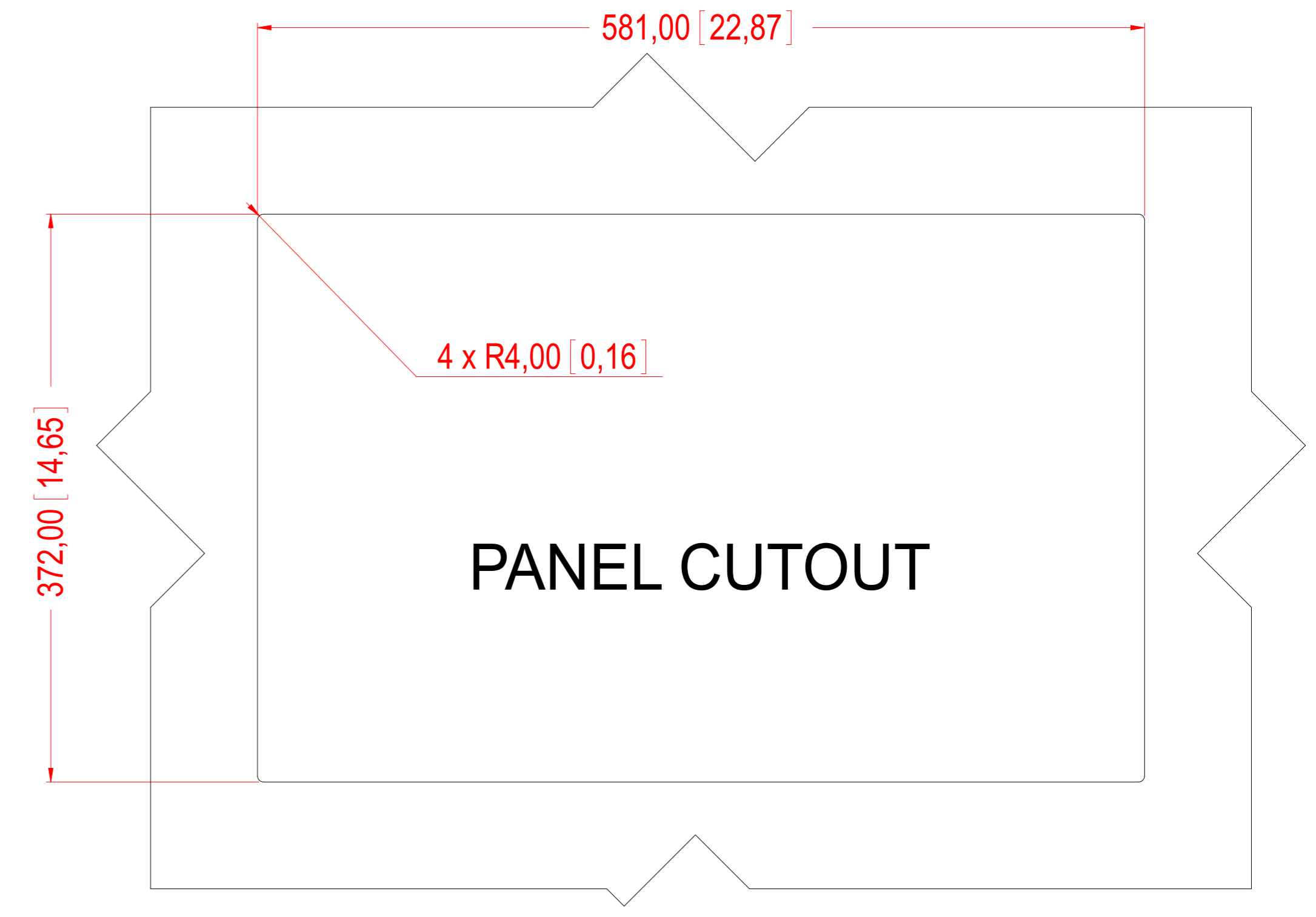
DIMETRIC VIEW



TOP VIEW



PANEL CUTOUT



Units: mm [inches]

SALES DRAWING HD 24T21 STD-MA1-FAGA
 shown in this drawing, but measurements generally apply for all HD 24T21 STD-xxx-Fxxx models

Date:	Mechanical Design	Projection:	A1	HATTELAND TECHNOLOGY	
14-12-2011	7251		Scale: 1:3	an EMBRON Company ®	
Hatteland Technology AS			Colour code:	Approved by:	Revision: 2
Eikeskogvegen 52			Surface treatment:	Drawing number:	
N-5570 Akdsdal				A002431-1	